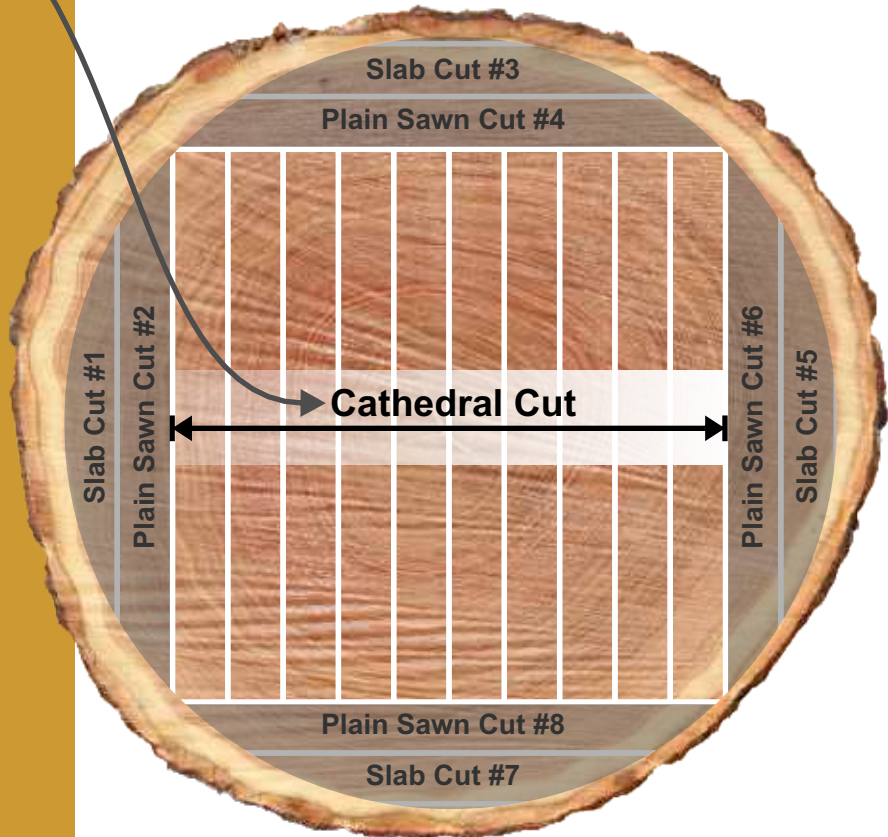


CATHEDRAL CUT



MUSCANELL MILLWORKS^{INC.}
Count on Quality

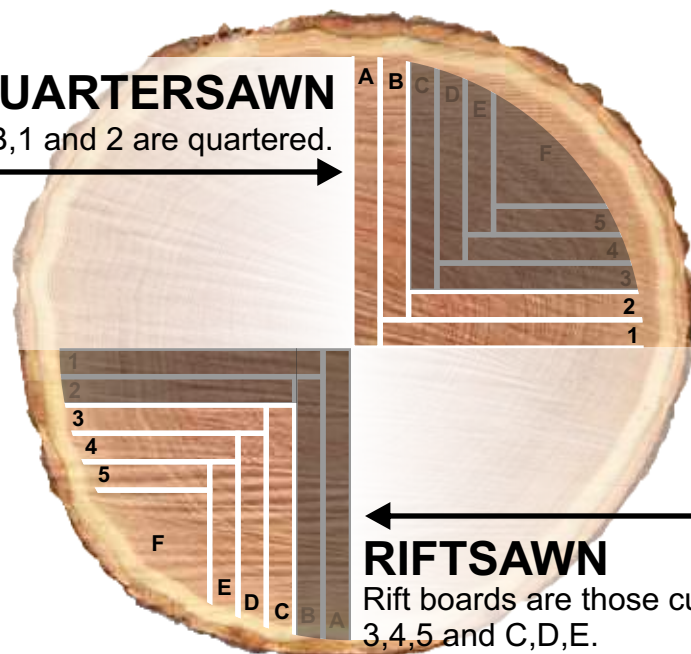
Cathedral cut flooring contains grain variation including plainsawn, quartersawn, and riftsawn (often all within one plank).



QUARTER & RIFTSAWN

QUARTERSAWN

Boards A,B,1 and 2 are quartered.



RIFTSAWN

Rift boards are those cut like 3,4,5 and C,D,E.